

Historic, Archive Document

Do not assume content reflects current scientific knowledge, policies, or practices.

62.67

THE GOOD & REESE

Blue Book

for

FLORISTS

Spring 1943

55th YEAR



GOOD & REESE, INC.

FLORISTS & NURSERYMEN

SPRINGFIELD, OHIO

TERMS

Three per cent discount for cash with order. Two per cent ten days. All bills due net 30 days. Purchasers desiring to open an account will please furnish trade references. No claims recognized unless made within 5 days of receipt of goods.

C. O. D. shipments must be accompanied by 25 per cent of amount of order.

All prices quoted F. O. B. Springfield, Ohio. No packing charge.

All goods offered subject to prior sale.

All advance orders accepted subject to crop failure and other causes beyond our control. Should shortage occur, we reserve the right to fill the orders pro rata.

Good & Reese, Inc., gives no warranty, expressed or implied, as to productiveness of any plants, bulbs, or seeds. Should any prove to be untrue to name, we agree to replace those found untrue, but in no case will we be held accountable for more than the invoice price paid by the customer for the untrue stock.



IMPORTANT NOTICE

As a protection to our customers who are entitled to Wholesale or Florists prices we ask that they do not lend this catalogue to retail buyers. Offers in this catalogue are extended only to those engaged in the trade. We reserve the right to refuse to fill orders for those not entitled to these prices.

No plant orders filled at these prices for less than 6 of a variety, except as noted. Less than 25 of a variety filled at dozen rates. 25 to 200 of a variety at hundred rates. Over 200 of a variety at thousand rates, where thousand rates are quoted.



The Sensational New Buddleia

ROYAL RED

Plant Patent No. 556. Propagation Rights Reserved.

In presenting Buddleia Royal Red we believe we are introducing a new hardy plant that will be the sensation of the plant world for years to come. Royal Red represents eight years of intensive breeding work, culminating in the first truly red Butterfly Bush. For summer cut flowers it is unsurpassed.

Prices 2¼ inch pots.

\$3.00 per 10, \$25.00 per 100.

Recommended Retail Prices

75c each, 2 for \$1.25.

OTHER BUDDLEIAS

All from 2¼ inch pots.

ROYAL PURPLE—The best violet purple variety.

\$2.00 per 12; \$15.00 per 100

DAYBREAK—New lilac color. Large flowers.

\$2.00 per 12; \$15.00 per 100

HARTWEGI—The best cut flower variety. Lavender blue.

\$1.50 per 12; \$10.00 per 100

CHARMING—The new rose pink Buddleia. Very fine.

\$1.50 per 12; \$10.00 per 100

ILE DE FRANCE—Rich purple color. Very popular.

\$1.20 per 12; \$ 8.00 per 100

NEW and IMPROVED GERANIUMS

In presenting this list of new Geraniums we believe we are introducing a collection of new varieties that will create sensational interest in the future. We have tested these varieties for the past five years and recommend them to be of unexcelled growth and blooming quality. Colors and shades never before produced in Geraniums are represented. You will profit with these outstanding new Geraniums.

SPRINGFIELD SCARLET—True scarlet with a distinct white eye.

SPRINGFIELD VERMILION—Bright vermilion scarlet. An unusual and pleasing color.

SPRINGFIELD WHITE—The largest and best white Geranium ever produced.

SPRINGFIELD SHELL PINK—Soft shell pink. Extremely prolific.

SPRINGFIELD BRILLIANT PINK—Bright glistening pink. Very bright and pleasing color.

SPRINGFIELD VIOLET—Deep rich violet. Flowers much larger than the popular Montmart variety.

SPRINGFIELD SALMON—Brilliant fiery salmon. Very robust and excellent bloomer.

SPRINGFIELD ORANGE—The first geranium of a true orange color. Very outstanding.

SPRINGFIELD ROSE PINK—An improved Pink Barney with larger flowers of similar color.

SPRINGFIELD CRIMSON—Large flowers of true crimson. Very prolific.

SPRINGFIELD CERISE—An unexcelled variety of pure cerise color.

PRICES

\$1.50 per 12, \$10.00 per 100, \$80.00 per 1000.

We will be pleased to send you without charge a large colored illustration of these new varieties upon application.

GERANIUMS

2¼ Inch Pot Plants

NEWER VARIETIES

ENCHANTRESS FIAT—Most prolific of all geraniums. Soft Enchantress pink.

Per Doz., \$1.50

Per 100, \$10.00

BETTER TIMES—A wonderful new variety. Same color as the famous Better Times Rose.

Per Doz., \$1.20

Per 100, \$ 8.50

DOUBLE DRYDEN—Beautiful variety with salmon pink flowers with a white eye.

Per Doz., \$1.20

Per 100, \$ 8.50

OLYMPIC RED—The best scarlet produced to date.

Per Doz., \$1.20

Per 100, \$8.50

STANDARD VARIETIES

PRICES ON ALL STANDARD VARIETIES

\$1.00 per 12; \$7.00 per 100; \$65.00 per 1000.

ALPHONSE RICARD—Bright vermilion red.

BEAUTE POITEVINE—Bright shrimp pink.

COMTESSE DE HARCOURT—Best pure white.

FIAT—(The True Variety)—Most popular salmon pink.

HELEN MICHELL—Very large brilliant scarlet.

IRVINGTON BEAUTY—Large rosy salmon flowers.

JEAN VIAUD—Deep rose pink. Unusual shade.

MARQUIS DE MONTMART—Rich purple flowers. A favorite.

MADAME BARNEY—Very popular rose pink.

MADAME LANDRY—Excellent salmon pink.

MISSOURI—Very large scarlet.

RADIO RED—Intense deep scarlet. Strong grower.

RED BARNEY—Very deep rich red Dwarf.

RED FIAT—Similar to Ricard. Very large flowers.

S. A. NUTT—The old popular deep scarlet.

TENNY'S SCARLET—A new scarlet that is exceptionally good.

IVY GERANIUMS

\$1.10 per 12; \$7.50 per 100

ALLIANCE—Delicate lilac-white, spotted crimson.

CAESAR FRANC—Beautiful shade of rich crimson.

SOUV. DE CHAS. TURNER—Rich deep pink.

DWARF FLOWERING FLORISTS FUCHSIAS

We are large growers of Fuchsias and we call special attention to the varieties listed below—they are dwarf branching and free flowering.

BLACK PRINCE—It makes a shapely bush, and is probably the freest in blooming. Blossoms of a beautiful waxy-carmine or pink color.

DOUBLE PURPLE—Large flowers of rich purple.

IRWIN'S GIANT PINK—The best Fuchsia yet introduced. Enormous flowers of beautiful salmon-pink.

LORD BYRON — Red sepals, corolla of the richest royal purple.

MADAM VAN DER STRASS — This is the best of the double white-corolla Fuchsias.

PRIDE OF ORION—Double red and white.

SPECIOSA—Well known variety, producing large flowers two inches in length, tubes and sepals of which are blush, the corolla crimson.

PRICES OF ABOVE VARIETIES (2¼ inch pots)

Doz.	100	1000
\$0.90	\$6.00	\$55.00

FUCHSIA LITTLE BEAUTY

The finest of all dwarf fuchsias. 2¼ inch pots.

12	100
\$1.00	\$7.00

NEW IVY GERANIUMS

New varieties never before offered in America. Distinctly improved over the older types.

2¼ inch pots, \$1.50 per 12; \$10.00 per 100.

ABEL CARRIERE—Very prolific. Deep lavender.

ACHIEVEMENT—Semi-double. Salmon pink.

BEAUTY OF JERSEY—Very bright cerise. Double.

KING EDWARD—Semi-double. Deep cerise.

LADY GERTRUDE—Bright pink. Double.

LEOPARD—Lilac with red splotches.

LORD BADEN POWELL—Light lilac color.

MRS. HAMILTON—Semi-double scarlet.

MRS. W. A. R. CLIFTON—Double scarlet.

SCENTED GERANIUMS

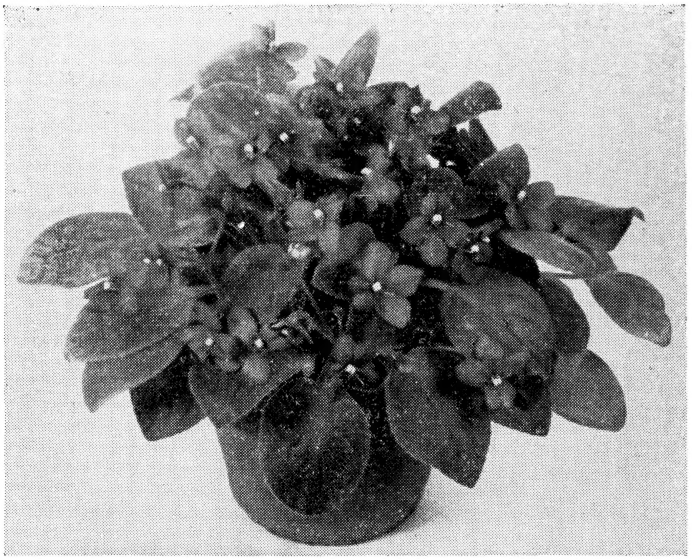
Offered in six of the best varieties. Rose Scented, Pine Scented, Orange Scented, Lemon Scented, Walnut Scented and Balm Scented.

2¼ inch pots, \$1.00 per 12, \$7.00 per 100.

Plants and Bulbs for Greenhouse and Nursery Planting

All plants from 2 1/4" pots unless otherwise stated

	Per 12	Per 100
ABUTILON—Variegated	1.20	8.00
ACALYPHA SANDERII—(Chenille Plant)	1.20	8.00
ACALYPHA TRICOLOR	1.20	8.00
ACALYPHA TRIUMPHANS	1.20	8.00
ACHYRANTHES BRILLIANTISSIMA	.85	6.00
AGAPANTHUS (Blue Lily of the Nile)	1.20	8.00
AGERATUM RIVERSIDE	.85	6.00
ALOYSIA CITRIODORA—(Lemon Verbena)	1.20	8.00
ALTERNANTHERA AUREA—Yellow	.70	5.00
ALTERNANTHERA BRILLIANTISSIMA—Red	.70	5.00
ALTERNANTHERA PARONYCHIODES—Light red	.70	5.00
ANTHERICUM VITATUM VARIEGATUM	1.20	8.00
ASPARAGUS PLUMOSUS NANUS	.85	6.00
ASPARAGUS SPRENGERII	.85	6.00
BELOPERONE GUTTATA	.90	6.50
BOUGAINVILLEA CRIMSON LAKE	1.35	10.00
BOUGAINVILLEA SANDERIANA	1.20	8.00
BROWALLIA GIGANTEA—Blue	.85	6.00
BRUGMANSIA—(Angel's Trumpet)	1.50	10.00
BUDDLEIA ASIATICA	.85	6.00
CLEMATIS PANICULATA	.85	6.00
COLEUS CHRISTMAS GEM—Rooted cuttings		3.00
COLEUS CHRISTMAS GEM—2 1/4 inch pots	.85	6.00
COLEUS C. W. SCHMIDT—(New)—Rooted cuttings		3.00
COLEUS C. W. SCHMIDT—2 1/4 inch pots	.85	6.00
CUPHEA—(Cigar Plant)	.75	5.00
CYPERUS—(Umbrella Plant)	.85	6.00
DAISY MARGUERITE—White	.85	6.00
DUSTY MILLER—Bush	.75	5.00
EUPHORBIA SPLENDENS—(Crown of Thorns)	1.35	10.00
GARDENIA VEITCHII	1.65	12.00
GREVILLEA ROBUSTA	.85	6.00
HELIOTROPE FLORENCE NIGHTINGALE	.85	6.00
HELIOTROPE ROYAL FRAGRANS	1.00	7.00
HELIOTROPE NEW WHITE	1.00	7.00
HEXIA—(Baby's Tears)	1.20	8.00
HONEYSUCKLE, HALL'S JAPAN	.85	6.00
IMPATIENS—Vermilion, salmon, red, white	.85	6.00
JAPANESE KUZDU VINE	1.00	7.00
JASMINE GRAND DUKE	1.50	10.00
JASMINE GRANDIFLORA—(Star)	1.50	10.00
JUSTICIA SANGUINEA—(Pink)	1.50	10.00
JUSTICIA VELUTINA—(Rose)	1.50	10.00
LEMON PONDEROSA	1.50	10.00
LIME RANGPUR	1.50	10.00
MESEMBRYANTHEMUM—(Ice Plant)	1.00	7.00
NEPHTHYTIS—(Arrowhead)	1.20	8.00
OLEANDER—Double red, yellow, pink, white	1.20	8.00
ORANGE OTAHEITE	1.50	10.00
PACHYSANDRA TERMINALIS	1.00	7.00
PEDILANTHUS VARIEGATUS	1.20	8.00
PEPEROMIA—(Watermelon Begonia)	1.50	10.00
PHILODENDRON CORDATUM	1.50	10.00
PILEA—(Artillery Plant)	.75	5.00
PLUMBAGO CAPENSIS	1.20	8.00
POTHOS WILCOXII	1.50	10.00
RUELLIA MOKOYANA	.85	6.00
RUSSELLIA ELEGANTISSIMA—(Scarlet Fountain)	1.00	7.00
SAGE HOLT'S MAMMOTH	.85	6.00
SAXIFRAGA—(Strawberry Geranium)	.85	6.00
SELAGINELLA BROWNII	1.20	8.00
SENECIO SCANDENS—(Parlor Ivy)	.85	6.00
STAPELIA (Jewel Flower)	1.00	7.00
STROBILANTHUS—(Royal Purple)	1.50	10.00
VINCA VARIEGATA	.85	6.00
VITIS RHOMBIFOLIA—(Grape Ivy)	1.20	8.00
WANDERING JEW—Bicolor and Tricolor	.75	5.00



Ulery's Blue Girl

THE NEW SAINTPAULIA DE LUXE

Here is the finest Violet yet produced in the Blue-Violet color. It is identical with Blue Boy in color but distinctly improved in habit of growth. Blue Girl is creating sensational interest wherever grown. Patented.

2¼ inch pots, \$2.00 per 12, \$15.00 per 100.

African Violet "Blue Boy"

We have a very large stock of Blue Boy—the most popular Saintpaulia yet produced. Flowers are a rich deep purple.

2½ inch pots, \$1.65 per 12, \$12.00 per 100.

3 inch pots, \$3.25 per 12, \$25.00 per 100.

DWARF FERNS FOR FERN DISHES

Offered in Assortment of Best Varieties

	Per 12	Per 100	Per 1000
2¼ inch pots.....	\$0.85	\$6.00	\$55.00

ASPARAGUS

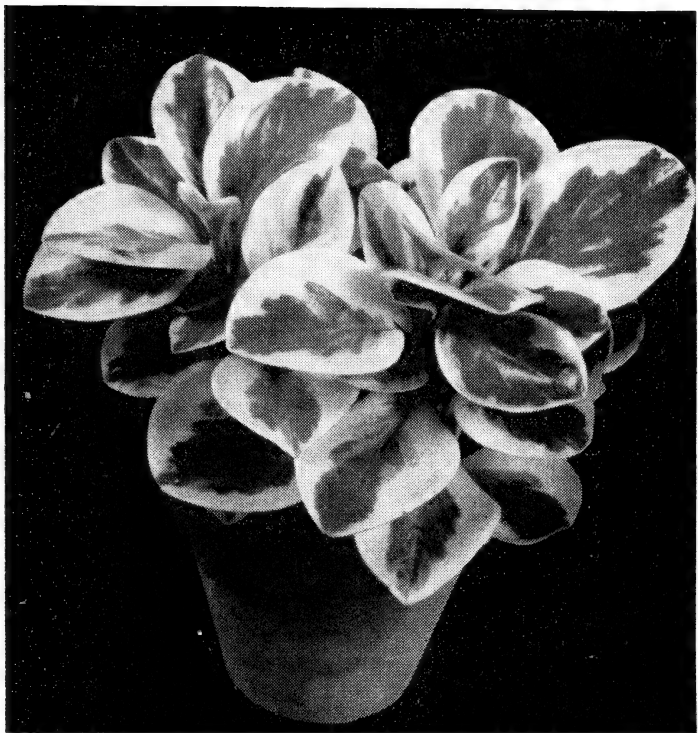
A dependable supply.

	Per 12	Per 100	Per 1000
PLUMOSUS NANUS—			
2¼ inch pots.....	\$0.85	\$6.00	\$55.00
SPRENGER—			
2¼ inch pots.....	\$0.85	\$6.00	\$55.00

MOSS FERN

(Selaginella Emiliana.) An upright growing moss with delicate lacelike foliage. Suitable for fern dishes or for tables and house decoration.

Per doz., \$1.00; Per 100, \$7.00



SILVER STRIPED PEPEROMIA

Here is one of the finest new plants for the home. The leaves have a broad margin of light creamy yellow which shows an irregular outline toward the center of the leaves which are two-toned green. We have a beautiful stock of this fine plant.

2¼ inch pots, \$1.50 per 12, \$10.00 per 100.

GREEN LEAVED PEPEROMIA

The ever popular green leaved type.

2¼ inch pots, \$1.00 per 12, \$6.00 per 100.

WATERMELON BEGONIA

(Peperomia Sandersii)

Our stock of this popular plant is the finest we have ever grown. The deep green leaves have silvery gray stripes which are similar to the markings on the Watermelon.

2¼ inch pots, \$1.50 per 12, \$10.00 per 100.

3 inch pots, \$2.50 per 12, \$20.00 per 100.

LANTANAS

Although we have been increasing our production of Lantanas in the past several years, the demand has constantly exceeded the supply. For the coming season we have one hundred and fifty thousand plants in prime condition. Every florist can handle this plant on a profitable basis—both as a blooming pot plant and as a bedding subject. For general spring sales, shift the plants into 3 or 4 inch pots. We have added several new varieties this year that are very outstanding.

- DWARF WHITE** (New)—Dwarf. Pure white.
SENSATION (New)—Medium dwarf. Lavender and yellow.
DWARF BEAUTY (New)—Dwarf. Orange bronze.
GOLDEN KING (New)—Dwarf. Golden yellow.
CRAIGI—The best dwarf red variety.
M. SCHMIDT—Most popular lantana. Orange bronze.
RADIATION—Similar to M. Schmidt. Very fine.
TETHYS—Dwarf. Lemon yellow.
SOUTHERN—Dwarf. Pink and yellow.
LA PLEUR D'OR—Dwarf. Best golden yellow.
JACOB SCHULTZ—Red, yellow and orange.
BIENCOURT—Lavender and pink.
WEEPING—Weeping type. Lavender flowers.

PRICES—ALL VARIETIES

2¼ Inch Pots

\$1.00 per 12; \$6.50 per 100; \$60.00 per 1000.

CHINESE HIBISCUS

- DOUBLE CRIMSON**—Flower of the richest crimson, combined with glossy foliage.
GRANDIFLORUS—Rich, glossy, cut-leaved foliage, literally covering the plant with scarlet-crimson flowers.
PEACHBLOW—Flowers double and 4 to 5 inches across. Bright rose pink with crimson centers. The most popular variety.
SUB-VIOLACEOUS—Flowers of enormous size, beautiful carmine, tinted violet. Probably the largest flower of the Hibiscus family, and an unusually free bloomer.
WEDDINGII—Large single flowers of bright crimson. Easy to grow and a profuse bloomer.

	Doz.	100	1000
2¼ inch pots.....	\$1.00	\$7.50	\$70.00
4 inch pots.....	4.00	30.00	



SANSEVIERIA HAHNII

The Beautiful New Rosette Type

Plant Patent No. 470. Propagation Rights Reserved.

We consider Sansevieria Hahnii the finest new house plant introduced in years. Having tested it for the past several years under very trying conditions we can state that it is the most satisfactory of all plants for the home. It always retains its true rosette character and never grows out of shape. We consider ourselves fortunate in being able to assist in its introduction to the American public.

2½ inch pots, \$2.50 per 12, \$20.00 per 100.

NEW KALANCHOE "TOM THUMB"

We have a fine stock of this new dwarf form of the popular Globulifera Coccinea type with which it is identical in every respect except in height of growth.

2½ inch pots, \$1.50 per 12, \$10.00 per 100.



NEW IVY **SYLVANIAN BEAUTY**

Plant Patent Number 430. Propagation Rights Reserved.

If ever an Ivy is produced that is more beautiful than Sylvanian Beauty it will be worth its weight in gold. No words can describe the beauty of this plant. Sylvanian Beauty branches profusely thus forming a dense mat of foliage. The older leaves are large and dark green—the younger leaves are lighter in color, forming a very pleasing contrast and appearance. Both Sylvanian Beauty and Maple Queen are practically immune to leaf spot which is a very essential characteristic in the growing of a good Ivy plant. Your customers will marvel at the beauty and vigor of this most outstanding new plant.

ROOTED CUTTINGS

\$7.50 per 100, \$60.00 per 1000

2000 or more at \$50.00 per 1000

2¼ inch Pot Plants, \$12.50 per 100.

3 inch Pot Plants

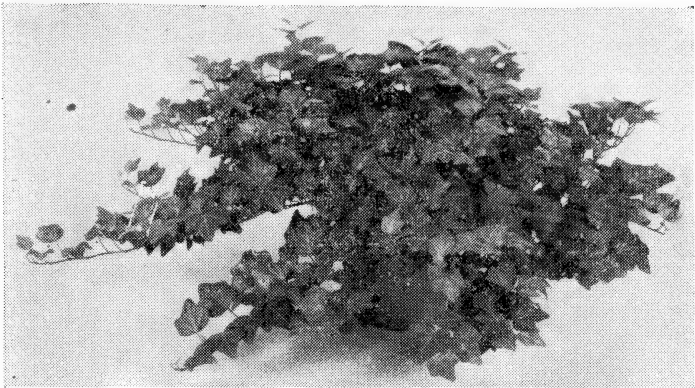
Extra Heavy, \$4.25 per 12, \$35.00 per 100

Lighter Pot Grown, \$3.25 per 12, \$25.00 per 100.

4 inch Pot Plants

Extra Heavy, \$6.00 per 12, \$50.00 per 100.

Lighter Pot Grown, \$4.25 per 12, \$35.00 per 100.



NEW IVY
MAPLE QUEEN

Plant Patent Number 429. Propagation Rights Reserved.

Maple Queen literally branches at every leaf node forming the most dense and compact plant imaginable. The leaves are of medium size and very closely spaced. A uniform deep green color is carried throughout the entire plant. The leaf veins stand out very prominently. The illustration above does not adequately show the free branching character of this beautiful variety. It is practically immune to leaf spot. Maple Queen will undoubtedly replace all other forms of branching Ivies because of its beauty, freedom from disease and general all around ability to thrive under the trying conditions in the modern home.

ROOTED CUTTINGS

\$7.50 per 100, \$60.00 per 1000
2000 or more at \$50.00 per 1000

2 1/4 inch Pot Plants, \$12.50 per 100.

3 inch Pot Plants

Extra Heavy, \$4.25 per 12, \$35.00 per 100
Lighter Pot Grown, \$3.25 per 12, \$25.00 per 100.

4 inch Pot Plants

Extra Heavy, \$6.00 per 12, \$50.00 per 100.
Lighter Pot Grown, \$4.25 per 12, \$35.00 per 100.

VINES

The Leaders for Home Decoration

MERION BEAUTY NEW SELF-BRANCHING IVY

This variety has made a tremendous hit with the trade and buying public. Just the thing for miniature gardens, bowls, etc. Every grower should have this variety. Smaller leaves than Hahn's variety and branches at every joint.

2¼ inch pots, \$1.50 per 12; \$10.00 per 100.

SELF-BRANCHING IVY—(Hahn's Variety)

We consider this new Ivy the best variety yet produced. It is rapidly replacing all other Ivies for indoor growing. The plants are self branching and need only a small pinch now and then in order to make beautiful specimens. By all means, try this outstanding new plant.

2¼ inch pots, \$1.20 per 12; \$8.00 per 100.

VITIS RHOMBIFOLIA (Grape Ivy)

A graceful trailing vine with dark glossy green leaves. An excellent vine for house culture.

2¼ inch pots, \$1.20 per 12; \$8.00 per 100.

VARIEGATED ENGLISH IVY

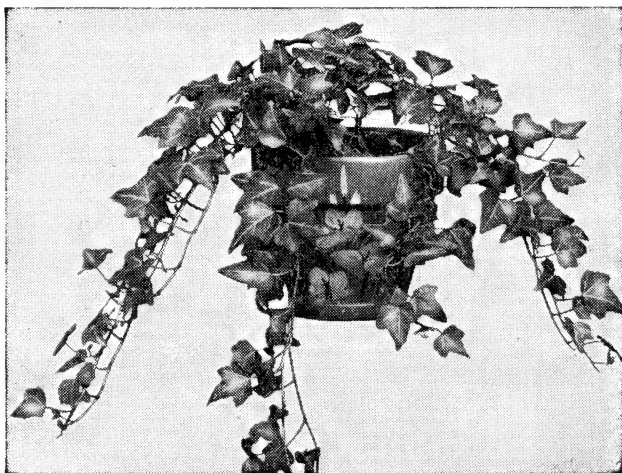
A new introduction that is fast becoming popular. Every florist using English Ivy will be handling this new type. It is decidedly worthwhile.

2¼ inch pots, \$1.20 per 12; \$8.00 per 100.

HARDY ENGLISH IVY

Evergreen with dark, glossy, green leaves.

2¼ inch pots, \$0.85 per 12; \$6.00 per 100.



Self-Branching Ivy—Hahn's Variety



PHILODENDRON CORDATUM

Florists have found an unusually large demand for this valuable trailing vine and it can be merchandised with the assurance of giving utmost satisfaction with a minimum of care.

2¼ inch pots, \$1.50 per 12; \$10.00 per 100.

PHILODENDRON OXYCARDIUM (New Red Leaved Variety)

A new variety with leaves of lustrous green on upper surface and a distinct reddish cast on the lower side. A fine new Philodendron that is becoming very popular.

2¼ inch pots, \$2.00 per 12; \$15.00 per 100.

POTHOS WILCOXII

This beautiful climbing vine has become deservedly popular because of its adaptability to the unnatural conditions of the average home. It is particularly suitable for sun-parlor decoration and grows equally satisfactorily in any part of the home, even in comparatively dark situations.

2¼ inch pots, \$1.50 per 12; \$10.00 per 100.

No plant orders filled at these prices for less than six of a variety, except as noted. Less than 25 of a kind filled at dozen rates. 25 to 200 of a variety at hundred rates. Over 200 of a variety at thousand rates, where thousand rates are given.

PLANTS FOR MINIATURE GARDENS

Succulents and Allied Subjects

The demand for plants suitable for miniature garden work is steadily on the increase. Every florist should offer these unusual plants to his trade—they will pay him handsome returns. Succulents are here to stay because of their wonderful lasting qualities and we have found them to be the best plants for house culture. This list covers a most complete line of plants that are suitable for use either in miniature gardens or as individual pot plants. We call your attention to the special collections which are reasonable in price and include the best selling items.

	Per 12	Per 100
ALOE BREVIFOLIA	\$1.50	\$10.00
ALOE NOBILIS	1.50	10.00
ALOE SPINOSISSIMA	1.50	10.00
ASPEDIUM FERN85	6.00
BUXUS SEMPERVIRENS85	6.00
CHINESE EVERGREEN	2.00	15.00
CRASSULA ARBORESCENS	1.20	8.00
CRYPTOMIUM (Holly Fern)85	6.00
ECHINOPSIS MULTIPLEX	1.50	10.00
EPIPHYLLUM (Christmas Cactus)	1.20	8.00
EUPHORBIA MAMILLARIS	1.50	10.00
EUPHORBIA SPLENDENS	1.50	10.00
FERNS—Dish Varieties85	6.00
MOSS FERN—SELAGINELLA	1.00	7.00
GASTERIA LINGUIA	1.50	10.00
GREVILLEA ROBUSTA85	6.00
HEXIA—IRISH MOSS or BABY'S TEARS	1.20	8.00
ENGLISH IVY85	6.00
VARIEGATED IVY	1.20	8.00
MALPHIGIA (DWARF HOLLY)	1.50	10.00
OPHIPOGON JAPONICA85	6.00
OPUNTIA CYLINDRICA	1.50	10.00
OPUNTIA MAMILLATA	1.50	10.00
OPUNTIA MICRODASYS (BUNNY EARS)	1.50	10.00
OPUNTIA TERES	1.50	10.00
OPUNTIA VILIS	1.50	10.00
PACHYSANDRA TERMINALIS	1.00	7.00
PEPEROMIA OBTUSIFOLIA85	6.00
PEPEROMIA (WATERMELON BEGONIA)	1.50	10.00
PEPEROMIA (SILVER STRIPED)	1.50	10.00
SAXIFRAGA SARMENTOSA85	6.00
SANSEVIERIA ZEYLANICA85	6.00
SANSEVIERIA LAURENTI	2.00	15.00
SANSEVIERIA HAHNII	2.50	20.00
SEMPERVIVUM HAWORTHII85	6.00
SEMPERVIVUM TECTORUM	1.00	7.00
SHAMAECEUS SYLVESTRIS (PEANUT CACTUS)	1.50	10.00

Realizing that many florists are unacquainted with most of these plants, we are offering three special collections of Miniature Garden plants. These collections include the best selling plants and are exceptional values in every particular.

\$6.00

\$8.00

\$12.00

In ordering, state Miniature Garden Collection.

No plant orders filled at these prices for less than 6 of a variety, except as noted. Less than 25 of a variety filled at dozen rates. 25 to 200 of a variety at hundred rates. Over 200 of a variety at thousand rates, where thousand rates are quoted.



Aloe Nobilis
Peanut Cactus

Opuntia Microdasy
Echinopsis Multiplex
Opuntia Cylindrica
Aloe Humilis

Cereus Peruvianus
Euphorbia Submammillaris

New and Rare Plants for Fancy Pottery, Miniature Gardens, Etc.
\$1.50 per 12; \$10.00 per 100.

We have a fine stock of unusual and rare CACTI, ALOES and allied plants, only a few of which are illustrated above. When not acquainted with varieties, we would suggest leaving the selection to us. We assure you we will select only the best selling varieties in the proper proportions.

CHINESE EVERGREEN

(Aglaonema Modestum)

The most satisfactory of all plants for
indoor growing

We are fortunate in having an excellent stock of this very outstanding plant. For dependability, no plant can compare with Chinese Evergreen for the home. In the past several years, it has increased in popularity to the point where it is now the most popular plant in most sections for use in fancy pottery and ornaments.

2½ inch pots, \$2.00 per 12; \$15.00 per 100.

COLEUS

Rooted Cuttings, \$2.00 per 100; \$17.50 per 1000.

2¼ inch plants, \$0.70 per 12; \$4.50 per 100.

ACME—Bronze, red center, edged green.

ADMIRATION—Deep claret red, edged green and yellow.

BECKWITH GEM—Dark velvety-maroon, bordered fiery-red, edged green.

BUTTERFLY—Rainbow effect. All colors.

EMPRESS OF INDIA—Bronze-red, golden yellow edge.

FIRECREST—Carmine crimson, bordered scarlet.

JOSEPH'S COAT—An intermingling of many colors.

LIBERTY—Red center, yellow border.

MAY LEVERING—Spotted and striped with maroon, green, red and yellow.

QUEEN OF THE WEST—Creamy-white and oxide-green, margin bright yellow.

SENSATION—Crimson-maroon, center bright red.

SETTING SUN—Velvety-red, bordered yellow.

VERSCHAFFELTI—A rich velvety crimson.

YEDDO—Green, yellow and white.

YELLOW BIRD—Clear bright yellow.

COLEUS TRAILING QUEEN—The finest of all plants for boxes, baskets or vases; it droops and hangs down two feet or more, not one little vine, but a whole clump of them. The center of foliage is scarlet, then around that a chocolate border, and outer edge of leaf margined green.

COLEUS CHRISTMAS GEM

We have a very large supply of this profitable florist's plant. Color carmine shading off to a deep maroon, margin yellow and green.

	Per 100	Per 1000
Rooted Cuttings	\$3.00	\$25.00
2¼ inch pots.....	5.00	45.00

NEW COLEUS C. W. SCHMIDT

We predict this new Coleus will be more popular than Christmas Gem when it becomes better known. It is an improved Setting Sun with center of velvety crimson edged and spotted gold. It is especially fine when grown in 4 and 5 inch pots.

	Per 100	Per 1000
Rooted Cuttings	\$3.00	\$25.00
2¼ inch pots.....	5.00	45.00

ROSES

Own Root Plants from 2¼ Inch Pots

HYBRID TEA VARIETIES

\$1.10 per 12, \$7.50 per 100.

Alexander H. Gray—Yellow	Antoine Rivoire—Pink
Ami Quinard—Deep Crimson	Crimson Queen—Crimson
Duchess of Wellington— Yellow	E. G. Hill—Red
Etoile De Hollande—Red	Eugene Marlitt—Carmine
David O. Dodd—Red	Gruss An Teplitz—Red
Francis Scott Key—Red	Golden Ophelia—Yellow
J. J. L. Mock—Pink	K. A. Victoria—White
Kitchener of Khartum—Red	Lady Hillingdon—Yellow
La Champagne—Yellow	Laurent Carle—Crimson
Madame Butterfly—Pink	Maman Cochet—Pink
Mrs. A. R. Waddell—Pink	Mrs. B. R. Cant—Red
Mrs. Chas. Bell—Salmon	Radiance—Pink
Red Radiance—Red	Rev. F. Page Roberts— Yellow
Talisman—Orange	White Cochet—White

CLIMBING ROSES

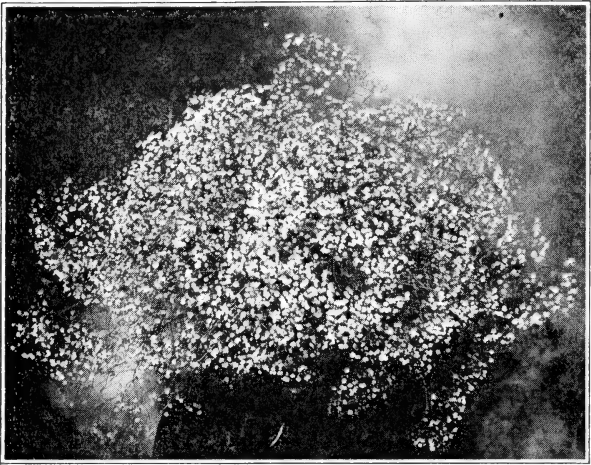
\$1.10 per 12, \$7.50 per 100.

Climbing American Beauty— Rosy Red	Climbing Radiance—Pink
Climbing Red Radiance—Red	Dr. Huey—Crimson
Dr. W. Van Fleet—Pink	Gardenia—Yellow
Mary Wallace—Pink	Primrose—Yellow
Silver Moon—White	Paul's Scarlet—Scarlet
Shower of Gold—Yellow	Veilchenbl'au—Bluish cast

POLYANTHA OR BABY ROSES

\$1.10 per 12, \$7.50 per 100.

Catherine Zeimet—White	Clothilde Soupert—White
Chatillon Rose—Pink	George Elger—Yellow
Gloria Mundi—Orange	Gruss An Aachen—Pink
Mlle. C. Brunner—Pink	Orleans—Red
Perle D'or—Yellow	Tip-Top (Baby Doll)— Yellow



GYPSOPHILA BRISTOL FAIRY

The Best Double Flowering Baby's Breath

In Bristol Fairy we have a wonderful advance over all other types. The flowers are perfectly double, pure snow white and two to three times the size of *Gypsophila paniculata flore plena*. Bristol Fairy blooms early and continues to throw up flowers from the base bearing the fine sprays from June until killing frost. The dried flowers retain their pearly whiteness throughout the winter so that they can be depended upon to lighten the stiffness and formality of winter bouquets. Both sizes will flower the first year.

Strong Grafted Plants From 3 Inch Pots

\$2.25 per 12; \$17.50 per 100; \$150.00 per 1000

NEW HARDY FUCHSIA

(*Fuchsia Magellanica*)

This most interesting shrub came from the New York Botanical Garden, where it has proven entirely hardy. It is in bloom all summer long until stopped by frost. The ruby-red pendent flowers are produced by the hundreds, flowering just as freely in full sun as in light shade. A most interesting plant for the flower border or rock garden, where it fits in perfectly, blooming all summer. Like all Fuchsias, they are especially adapted for shady locations. We advise protection anywhere north of Philadelphia

\$1.50 per 12; \$10.00 per 100



EARLY WONDER

The Finest Hardy Cut Flower Chrysanthemum

**Plant Patent No. 490
Propagation Rights Reserved**

We are indeed proud to introduce the first truly fine hardy cut flower chrysanthemum. Early Wonder is the greatest advance made in hardy 'Mums in years. An arm-load of perfectly shaped flowers of the same good quality as those produced under glass may now be grown out of doors. Early Wonder is in full flower in late September—sufficiently early to give a complete crop of flowers in all sections of the country. On first opening the flowers are dainty Dawn and Baby Pink, blending to Peachblossom Pink, when fully open. The individual flowers average 2 to 3 inches and have remarkable substance.

Early Wonder is very hardy and is extremely easy to grow. It is unusually prolific, the plant being a blaze of flowers for weeks. For cutting and garden display Early Wonder is by far the most outstanding hardy 'Mum produced in years. Sold only by Good & Reese, Inc.

**Rooted Cuttings \$3.25 per 12; \$25.00 per 100.
Retail Price \$1.00 each.**

Early Hardy Chrysanthemums

These varieties have been selected for hardiness and earliness of flowering. In this latitude all will flower from August until October 10th which is our normal killing frost date. In the northern states we advise a light mulch of straw or leaves on all 'Mums left out of doors in the winter.

Rooted Cuttings

\$4.00 per 100; \$35.00 per 1000.

Plants from 2¼ inch pots

\$0.85 per 12; \$5.50 per 100; \$50.00 per 1000.

- ADIRONDA**—Small, compact, bronze flowers.
ALADDIN—Early Bronze.
ALICE HOWELL—Orange Bronze.
AMELIA (same as Pink Cushion)—Bright, pink, very free flowering.
CAVALIER—Vermilion red, large single, excellent.
CRIMSON SPLENDOR—Magnificent large crimson.
DAYBREAK—Soft baby pink.
FRED PEELE—Yellow button.
GOLDEN QUEEN—Large yellow.
GRANNY SCOVILLE—Warm coral bronze, large flowers.
GRENADIER—Bright crimson red.
HARVEST HOME—Beautiful bronze.
INNOCENCE—Pure white changing to soft pink, profuse bloomer.
JEAN TREADWAY—Pink with deep center.
L'ARGENTUILLAIS—Bronze tipped with yellow.
LITTLE BOB—Bronze red, button.
MRS. F. H. BERGEN—Pale pink with deep pink center.
MRS. H. HARRISON—Full double creamy pink.
MURILLO—Pink, best of its color.
PHILADELPHIA—Lavender pink.
PINK CUSHION—Bright pink, plant covered with flowers.
VIVID—Large rosy crimson.
WINETKA—Pure white, free flowering.

ASTRID

The New 'Mum of Iron-Clad Hardiness

Astrid is a hybrid of the extremely hard species, *C. Arcticum*, and the first hybrid of this variety to be introduced. The single, daisy-like flowers are 3 inches or more in diameter, and are a lovely shade of shell-pink, warmed with old rose tints, with a bright yellow center. The plants have attractive light green foliage, not bothered by diseases or insects. It is the hardiest hybrid chrysanthemum we know of, having come through the past two severe winters without protection and without damage. After being established for two years, Astrid produces more flowers and makes a larger plant than any other Chrysanthemum.

2¼ inch pots, \$2.00 per 12; \$15.00 per 100

NEW WINTER HARDY HYBRID KOREAN CHRYSANTHEMUMS

These new creations are especially fine for cold climates where the ordinary chrysanthemum winter-kills. They are hardier, most attractive with their lovely new pastel shades, and early flowering. The Korean Hybrids are undoubtedly the greatest advance made in years in chrysanthemums.

Rooted Cuttings, \$4.00 per 100; \$35.00 per 1000.

2¼ inch plants, \$0.85 per 12; \$5.50 per 100.

APOLLO—Superb autumn color—a sparkling combination of bronze, red, and gold suffused with glowing salmon. The single flowers, 2 inches across, are produced in immense sprays. Long flowering period. Height 2½ feet.

CERES—A lovely combination of old-gold, chamois-yellow, and soft coppery bronze. The mature flower petals appear as if dusted with gold. Handsome sturdy plant producing a quantity of nicely formed single flowers in branching sprays. Height, 2½ feet.

DAPHNE—Altogether a new shade of pink to the chrysanthemum. An exquisite blending of Daphne-pink, with an underlying sheen of lilac rose, enhanced with prominent golden stamens in the center. The single flowers, 3½ inches in diameter, carried in graceful sprays, are especially frost-resistant. Fine, healthy-growing habit. Height, 2½ feet.

HEBE—Remarkably hardy and early, the delightfully fragrant silvery pink blossoms of this variety present a lively color mass in the fall garden. Enthusiastic reports from northern latitudes substantiate all our claims for this fine variety. Height, 2½ feet. Late September.

INDIAN SUMMER—A very hardy variety. Double glowing orange flowers, 3 inches across, somewhat shaggy in make-up. Fine plants, never requiring support of any kind. Height, 2 to 2½ feet.

LOUISE SCHLING—Deep, dazzling red. Very vigorous growth. Height, 3 feet. One of our favorite 'Mums.

MARS—Deep amaranth-red, changing to wine red overlaid with a velvety sheen. A distinct and striking color effect. Height, 2½ feet.

MERCURY — (Plant Patent No. 58) — The 3-inch, single flowers open bronze-red and change to coppery bronze as they mature, a charming effect in the garden. The graceful sprays when cut keep two to three weeks. Height, 2 feet.

ROMANY — The color is between carmine and nopal-red, with bronze tones. It is enhanced by the gold reverse showing on the incurved center petals. The long-lasting flowers will remain in good condition at least three weeks when cut. Height, 2½ feet. In full flower October 5.

VULCAN—Glowing carmine-red, shading to garnet-crimson, changing to an attractive bronze-crimson as the flower matures. Double ray-like petals with a conspicuous golden center. Pleasingly fragrant. Height, 2½ feet. October 5.



THE FAMOUS CUSHION MUMS

The Azalea Flowered Chrysanthemums

No race of new plants has ever created more interest than the Cushion Chrysanthemums. The plants are dwarf and spreading in growth, very hardy, and far more prolific than the older types. Often as many as two thousand flowers are open at one time creating an effect that is really beyond description. We offer four new colors this year in addition to the pink variety which has been on the market for several years.

HARVEST GOLD

New Golden Yellow Cushion Mum

Introduced by Good & Reese 1940

From thousands of Mum seedlings, Harvest Gold was selected as the best cushion type yet produced. It is dwarf in growth, rarely exceeding a height of 12 inches and spreading out to a diameter of three feet when fully developed. Harvest Gold commences to flower in August and continues until killing frost. The flowers are pure golden yellow and produced in such profusion that the plant is a blaze of vivid coloring for many weeks. Harvest Gold is destined to be one of the most popular Mums.

Rooted cuttings, \$2.00 per 12, \$15.00 per 100. 2 1/4 inch plants, \$2.65 per 12, \$20.00 per 100.

BRONZE CUSHION (NEW)

Rich reddish bronze flowers turning to bronze yellow. A plant of this variety creates a sight of sensational beauty.

Rooted cuttings, \$4.00 per 100, \$35.00 per 1000. Plants from 2 1/4 inch pots, \$0.85 per 12, \$5.50 per 100.

WHITE CUSHION (NEW)

Flowers open a very delicate pink, turning to snow white. We have counted 2200 flowers on one plant of this variety. Commences to flower in August.

Rooted cuttings, \$4.00 per 100, \$35.00 per 1000. Plants from 2 1/4 inch pots, \$0.85 per 12, \$5.50 per 100.

RED CUSHION (NEW)

Every flower is brilliant deep red. Red Cushion is not harmed by early frosts, continuing to flower until very late fall.

Rooted cuttings, \$4.00 per 100, \$35.00 per 1000. Plants from 2 1/4 inch pots, \$0.85 per 12, \$5.50 per 100.

PINK CUSHION

We have selected only the best colored plants from our stock of this variety to improve the color. Pink Cushion was the first color in the Cushion Mums to be introduced and it is still the most popular of all varieties.

Rooted cuttings, \$4.00 per 100, \$35.00 per 1000. Plants from 2 1/4 inch pots, \$0.85 per 12, \$5.50 per 100.

Hardy Perennial Plants

We are giving special attention to our Hardy Plant Department. Our stock is exceptionally large this year, one million plants being grown especially for the shipping trade. The majority of the perennials here offered are field-grown clumps.

Please Note—Orders for perennial plants are shipped separately from greenhouse plants.

	Per 10	Per 100
ACHILLEA BOULE DE NEIGE—Double white	\$ 1.50	\$10.00
ACHILLEA THE PEARL—Pure white	1.25	8.00
AETHIONEMA PERSICUM—Pink flowers	1.75	12.00
AETHIONEMA WARLEY ROSE—New pink variety	2.25	17.50
AGROSTEMMA CORONARIA—Blood red	1.25	8.00
AJUGA REPTANS—Deep blue	1.50	10.00
ALYSSUM SAXATILE COMPACTUM—Golden yellow	1.50	10.00
ANCHUSA ITALICA DROPMORE—Blue	1.50	10.00
ANCHUSA MYOSOTIDIFLORA—Blue	1.75	12.00
ANEMONE JAPONICA QUEEN CHARLOTTE—Pink	1.75	12.00
ANEMONE JAPONICA RUBRA—Red	1.75	12.00
ANEMONE JAPONICA WHIRLWIND—White	1.75	12.00
ANEMONE HUPHENSIS—Mauve rose	1.75	12.00
ARABIS ALPINA FL. PL.—Double white rock cress	2.00	15.00
ARABIS ALPINA ROSABELLA—Clear pink	2.00	15.00
ARENARIA MONTANA—White	1.50	10.00
AQUILEGIA CRIMSON STAR—Crimson	2.00	15.00
AQUILEGIA MRS. SCOTT ELLIOTT HYBRIDS—Assorted colors	1.50	10.00
ARTEMISIA SILVER KING—Silver foliage	1.50	10.00
ASCLEPIAS TUBEROSA—(Butterfly Flower)—Orange	1.50	10.00
ARMERIA BEE'S RUBY—Bright red	2.00	15.00
ARMERIA LARGE FLOWERING HYBRIDS—All colors	1.75	12.50
AUBRETIA EYRII—Rosy lilac	2.00	15.00
ASTER CLIMAX—Bright blue	1.50	10.00
ASTER HARRINGTON'S PINK—Rose pink	2.25	17.50
ASTER HILDA BALLARD—New lilac shade	2.00	15.00
ASTER RED ROVER—Rich red	2.25	17.50
ASTER STRAWBERRIES & CREAM—Bright pink	2.00	15.00
ASTER FRIKARTI (Wonder of Staffa)—Blue	2.25	17.50
ASTER STAR OF WARTBURG—Rich Blue	1.75	12.50
BAPTISIA AUSTRALIS—Dark blue	1.50	10.00
BELLIS PERENNIS—Red, pink and white	1.00	8.00
BOLTONIA LATISQUAMA—Pink	1.25	8.00
CAMPANULA CARPATICA—Blue	1.50	10.00
CAMPANULA PERSICIFOLIA—Blue	1.50	10.00
CAMPANULA MEDIA (Canterbury Bells)—Blue, pink and white	1.50	10.00
CENTAUREA MONTANA—Violet blue	1.50	10.00
CARNATION GRENADIN—Red, pink, white and yellow	1.25	8.00
CARNATION CRIMSON KING—Crimson	1.50	10.00
CERASTIUM TOMENTOSUM (Snow-in-Summer)	1.50	10.00
CHEIRANTHUS ALLIONI (Wall Flower)	1.25	8.00
CIMICIFUGA RACEMOSA (Snake Root)	1.50	10.00
COREOPSIS GRANDIFLORA—Yellow	1.25	8.00
COREOPSIS DOUBLE SUNSET—New double yellow	1.75	12.50
DAISY SHASTA ALASKA—White	1.25	8.00
DAISY SHASTA MARCONI—New double white	2.25	17.50
DAISY SHASTA DOUBLE WHITE SWAN—Double white	2.00	15.00
DELPHINIUM CLIVEDEN BEAUTY—Improved Belladonna	1.25	8.00
DELPHINIUM BELLAMOSUM—Deep purple	1.25	8.00
DELPHINIUM BLACKMORE and LANGDON HYBRIDS	1.50	10.00
DELPHINIUM WREXHAM HYBRIDS (Hollyhock Strain)	1.50	10.00
DIANTHUS DELTOIDES BRILLIANT—Carmine red	1.25	8.00
DIANTHUS ROSE CUSHION—Rose pink	1.75	12.00
DIANTHUS BARBATUS (Sweet William)		
Crimson, pink, scarlet, white	1.25	8.00
DICENTRA EXIMEA (Plumy Bleeding Heart)	1.50	10.00
DICENTRA SPECTABILIS (Bleeding Heart)	2.75	22.50
DICTAMNUS FRAXINELLA RUBRA (Gas Plant)	1.75	12.00
DORONICUM EXCELSUM—Bright yellow	2.00	15.00
ERIGERON SPECIOSUS GRANDIFLORA—Rosy lilac	1.50	10.00
EUPATORIUM COELESTINUM (Hardy Ageratum)	1.50	10.00
EUPHORBIA COROLLATA—Pure white	1.50	10.00
FUNKIA UNDULATA VARIEGATA	1.50	10.00
GAILLARDIA DAZZLER—Yellow and maroon	1.50	10.00
GAILLARDIA GOLDEN GODDESS—Golden yellow	2.00	15.00
GYPSOPHILA BRISTOL FAIRY—Double white	2.00	17.50
GYPSOPHILA ROSY VEIL—Bright pink	1.75	12.00
GEUM LADY STRATHEDEN—Golden yellow	1.50	10.00
GEUM MRS. BRADSHAW—Fiery red	1.50	10.00
HELIANTHUS LODDON GOLD—New golden yellow	2.00	15.00
HELIANTHUS MUTABILIS (Rock Rose)—Mixed colors	1.50	10.00
HELIOPSIS SUMMER GOLD—New double yellow	2.00	15.00
HEMEROCALLIS FLAVA (Lemon Lily)	1.00	8.00
HEUCHERA RAIN OF FIRE—Bright red	2.00	15.00

HARDY PERENNIAL PLANTS

	Per 10	Per 100
HIBISCUS MALLOW MARVELS—Crimson eye, pink and red.....	\$ 1.25	\$ 8.00
HOLLYHOCKS (Shater's Double Type)		
Pink, maroon, scarlet, lilac, orange, white, yellow.....	1.50	10.00
IBERIS GIBRALTARICA (Hardy Candytuft)—Pink	1.50	10.00
IBERIS SEMPERVIRENS (Hardy Candytuft)—White	1.50	10.00
LATHYRUS (Hardy Sweet Pea)—Red, pink and white.....	1.50	10.00
LAVANDULA VERA (Lavender)—Blue	1.50	10.00
LIATRIS PYCNOSTACHYA—Purple	1.50	10.00
LIATRIS SEPTEMBER GLORY—New purple	2.00	15.00
LIATRIS WHITE PEARL—New white	2.00	15.00
LINUM PERENNE (Flax)—Blue	1.25	8.00
LILY OF THE VALLEY—2 year clumps	2.00	15.00
LOBELIA CARDINALIS—Cardinal red	1.50	10.00
LYCHNIS CHALCEDONICA—Scarlet	1.25	8.00
LYCHNIS VISCARIA FL. PL.—Red	1.75	12.00
MATRICARIA (Feverfew)—Dwarf white	1.25	8.00
MYOSOTIS PALUSTRIS SEMPERFLORENS (Forget-me-not)....	1.00	8.00
NEPETA MUSSINI—Lavender flowers	1.50	10.00
OENOTHERA MISSOURIENSIS (Evening Primrose)—Yellow....	1.50	10.00
PHYSALIS FRANCHETTI (Chinese Lantern)	1.50	10.00
PHYSOSTEGIA VIVID—Lavender	1.50	10.00
PENSTEMON CORAL GEM—Coral pink	1.50	10.00
PENSTEMON GARNET—New garnet red	1.75	12.00
PENSTEMON TORREYI—Scarlet	1.25	8.00
PLATYCODON GRANDIFLORA (Balloon Flower)	1.25	8.00
PLUMBAGO LARPENTAE—Deep purple	1.50	10.00
PHLOX SUBULATA ROSEA—Rose pink	1.50	10.00
PHLOX SUBULATA ATROPURPUREA—Deep red	1.50	10.00
PRIMULA VERIS HYBRIDS—All shades	1.50	10.00
PYRETHRUM GIANT HYBRIDS—New large strain.....	2.00	15.00
RUDBECKIA PURPUREA—Reddish purple	1.50	10.00
SALVIA PITCHERI—Rich blue	2.00	15.00
SALVIA TURKESTANICA—Pale pink	1.50	10.00
SCABIOSA CAUCASICA (Blue Bonnet)—Lavender.....	1.50	10.00
SCABIOSA HOUSE HYBRIDS—Blue shades	2.00	15.00
SEDUM ACRE (Mossy Stonecrop)	1.50	10.00
SEDUM SPECTABILE BRILLIANT—Bright red flowers.....	1.50	10.00
SILENE MARITIMA (Campion)—Pinkish white.....	1.25	8.00
SPIREA FILIPENDULA—White flowers	1.50	10.00
STATICE LATIFOLIA (Sea Lavender)	1.50	10.00
STOKESIA CYANEA (Cornflower Aster)—Blue	1.50	10.00
THALICTRUM ADIANTIFOLIUM (Meadow Rue)—White	1.50	10.00
TROLLIUS EUROPEAUS SUPERBUS (Yellow Globe Flower)....	2.00	15.00
TRITOMA PFITZERI (Red Hot Poker)	1.50	10.00
TUNICA SAXIFRAGA—Pink Flowers	1.25	8.00
VERONICA BLUE SPIRE—Deep blue	1.75	12.00
VERONICA LONGIFOLIA SUBSESSILIS—Deep blue	1.75	12.00
VIOLA APRICOT—Apricot yellow	1.50	10.00
VIOLA ARKWRIGHT RUBY—Ruby red.....	1.50	10.00
VIOLA JERSEY GEM—Rich violet.....	1.50	10.00
VIOLET PRINCESS OF WALES—Single blue.....	1.50	10.00
YUCCA FILAMENTOSA (Spanish Bayonet)	1.50	10.00

NEW CARNATION

IMPROVED CRIMSON KING

The Finest Hardy Everblooming Carnation Yet Introduced

The Truest Hardy Outdoor Carnation. A beautiful strain of hardy pink, which resembles most of all the indoor Carnation, blooming in great abundance all summer, flowers full double and of brilliant crimson color. Excellent for cutting, very hardy and extremely fragrant.

This new introduction is, we believe, of great value to the trade not only as a cut-flower but as well for garden show and particularly in connection with rock garden planting. Rock Gardens are of great interest today and here is a plant that will surely please your clients. Both sizes we offer will bloom profusely the first year.

2 1/4 Inch Pots

\$10.00 per 100; \$90.00 per 1000

ROSA ROULETTI

THE MINIATURE ROCK GARDEN ROSE

For many years this beautiful little rose was lost to cultivation. Several years ago a plant was found growing in an Alpine window-garden by M. Correvon, the famous Swiss Horticulturist. It is rapidly attaining popularity as a rock garden plant and as an edging subject. The plant grows about six to seven inches tall and blooms from early summer until heavy frost. The tiny rose-pink, quite double flowers are less than an inch in diameter.

2¼ inch pots, \$1.35 per 12, \$10.00 per 100.

BLEEDING HEARTS

DICENTRA SPECTABILIS

How many times have you ordered Bleeding Hearts during the winter and early spring only to receive the usual reply, "Sorry, sold out!" Why not grow your own! We offer you a good quality of A No. 1 quality plants from 2¼ inch pots.

\$1.20 per 12; \$8.00 per 100; \$75.00 per 1000.

Outstanding Ground Covers

EUONYMOUS RADICANS COLORATA

Being entirely evergreen, this plant is very attractive at all seasons. In winter, the foliage turns to a bronze red. This Euonymus is a very rapid grower rooting at every joint, and this gives a uniform, even effect.

2¼ inch pots, \$1.50 per 12; \$10.00 per 100; \$85.00 per 1000.

VINCA MINOR (Grave Myrtle)

PROBABLY THE BEST KNOWN GROUND COVER PLANT.

Field Clumps \$1.00 per 12; \$6.00 per 100; \$50.00 per 1000.

HARDY PHLOX

Sturdy plants from 2¼ inch pots.
All will flower first year.

NEW and SCARCE VARIETIES

\$1.20 per 12, \$8.00 per 100, \$75.00 per 1000.

- ANNIE LAURIE—Large salmon pink. Very fine.
CAROLINE VAN DEN BERG—The best blue to date.
DAILY SKETCH—Soft salmon with carmine eye.
HAUPTMAN KOEHL—Rich blood red. Extra fine.
LEO SCHALEGETER—Scarlet carmine with dark center.
LILLIAN—Salmon pink with crimson eye.
MRS. ETHEL PRITCHARD—Rich mauve purple.
MRS. HARDING—Deep salmon pink.
P. D. WILLIAMS—Large bright pink with rose center.

STANDARD VARIETIES

\$0.85 per 12, \$6.00 per 100, \$55.00 per 1000.

- AFRICA—Brilliant carmine red with blood red eye.
B. COMPTE—Rich French purple or wine color.
BEACON—Brilliant cherry red with wine-red eye.
BORDER GEM—Deep rich purple. Large trusses.
CHEVALIER—Cerise pink with deeper eye.
CHIEFTAIN—Bright ruby red. Unusual color.
ECLAIREUR—Carmine magenta with white eye.
E. J. FARRINGTON—Salmon pink with deeper red eye.
FIREBRAND—Flaming orange scarlet. Very outstanding.
GEORGE STIPP—Glowing salmon of large size.
MISS LINGARD—Large flowers of purest white.
MORGANROOD—Rich rose pink with deeper eye.
MRS. JENKINS—Early, large pure white.
PAINTED LADY—Very tall silvery pink with red eye.
R. P. STRUTHERS—Rich salmon pink with scarlet eye.
RHYNSTROM—Very beautiful rose pink.
RHEINLANDER—Salmon pink with claret red eye.
SALMON QUEEN—Beautiful shade of salmon pink.
THOR—Large flowers of salmon pink with red eyes.

GOOD & REESE, INC.

Springfield

Ohio